

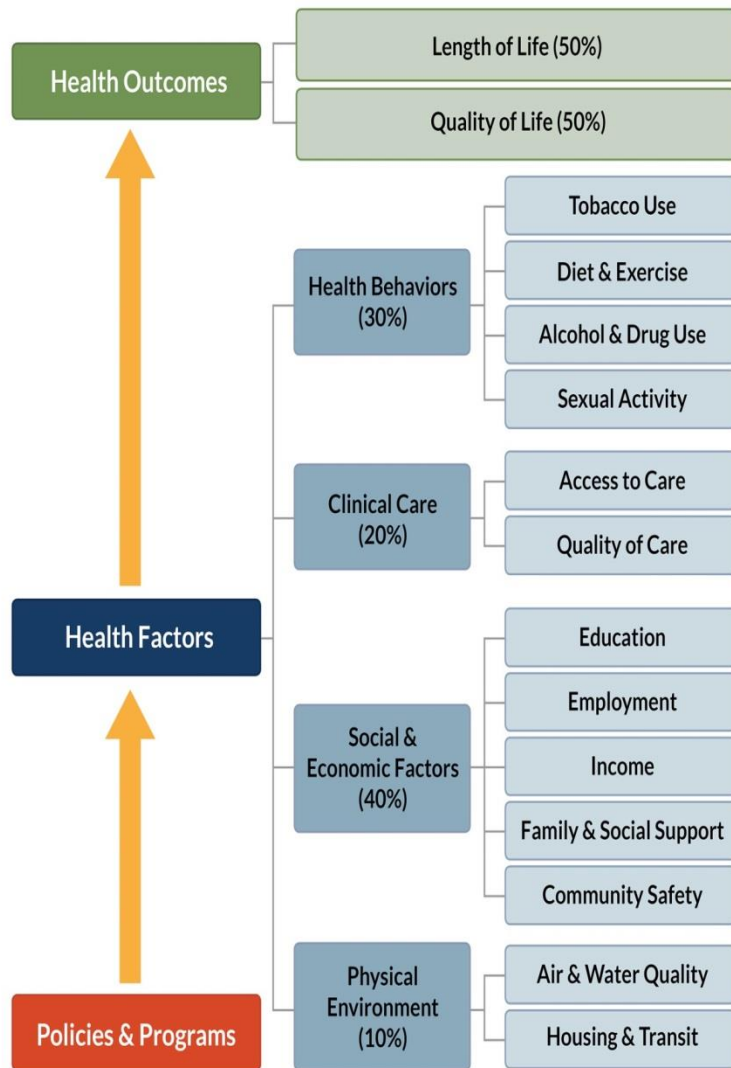
County Health Rankings & Roadmaps



Public Health
Prevent. Promote. Protect.

Shawnee County Health Department

Leading the way to a healthier Shawnee County



County Health Rankings model © 2016 UWPHI

County Health Rankings

31 public domain measures of important dimensions of health

RWJF and University of Wisconsin Madison:
www.countyhealthrankings.org/about-project/background



Public Health
 Prevent. Promote. Protect.

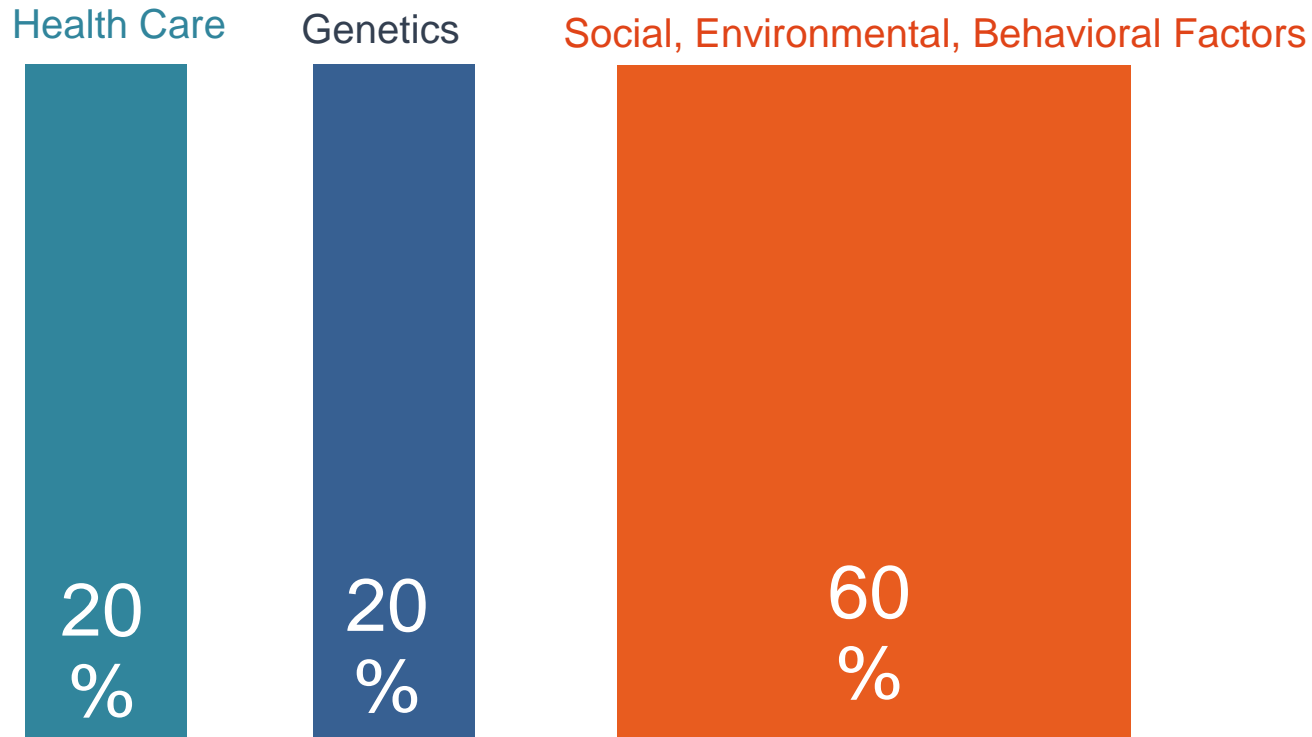
Shawnee County Health Department

SOME LIMITATIONS

- Ranking position may change for many reasons:
 - Random
 - Change in our county
 - Change in other counties
 - Change in methodology
- Data timeliness
- Information aggregated only at the county level



What Determines Health?



Source: Bradley & Taylor, *The American Healthcare Paradox*



Public Health
Prevent. Promote. Protect.

Shawnee County Health Department

Shawnee County Health Ranking

	2017	2018
Health Outcomes Ranking	65/102	61/103



Public Health
Prevent. Promote. Protect.

Shawnee County Health Department

Health Outcomes, Shawnee County



	Shawnee 2017	Shawnee 2018	Kansas
Health Outcomes RANK	65	61	NA
Length of life (premature deaths)	43	47	NA
Quality of life (low birth weight, self- reported poor health) RANK	77	72	NA



Public Health
Prevent. Promote. Protect.

Shawnee County Health Department

Shawnee County Health Ranking

	2017	2018
Health Factors Ranking	78/102	56/103
Health Outcomes Ranking	65/102	61/103



Public Health
Prevent. Promote. Protect.

Shawnee County Health Department

Socio-Economic Factors, Shawnee County



	2017	2018	KS
SE FACTORS RANK	81	70	NA
Violent crime rate	440	440	348
% Unemployed	4.3	4.1	4.2
% Children in single parent house	34	33	29
% Children in poverty	20	14	14
% High school graduation	80	80	86



Public Health
Prevent. Promote. Protect.

Shawnee County Health Department

Behavioral Factors, Shawnee County



	2017	2018	KS
BEHAVIORAL FACTORS RANK	91	63	NA
% adult smokers	19	16	17
Sexually transmitted infections rate	501	499	384
% adults obese	33	35	32
% access to recreational opportunities	86	87	81



Public Health
Prevent. Promote. Protect.

Shawnee County Health Department

Leading the way to a healthier Shawnee County

Clinical Care, Shawnee County

Clinical Care

	2017	2018	KS
Clinical Care RANK	10	4	NA
% uninsured	12	9	10
Primary care physicians rate	70	72	76
% diabetes monitoring	90	90	86
% mammography screening	68	68	63



Public Health
Prevent. Promote. Protect.

Shawnee County Health Department

Leading the way to a healthier Shawnee County

THE GOOD NEWS

- We increased by 22 positions in Health Factors
 - Highest increase in the state
- Adult smoking percentage lower than the state average
- Children in poverty improved from 20% to 14%
 - Black: 31%
 - Hispanic: 30%
 - White: 13%

1 IN 7 CHILDREN IN SHAWNEE COUNTY LIVE IN POVERTY



Public Health
Prevent. Promote. Protect.

Shawnee County Health Department

THE GOOD NEWS

- Clinical care overall good (#4 in state)
 - Both access and quality
 - Uninsured rate dropped from 12% to 9%
 - Better than state average
 - Preventable hospital stays improved



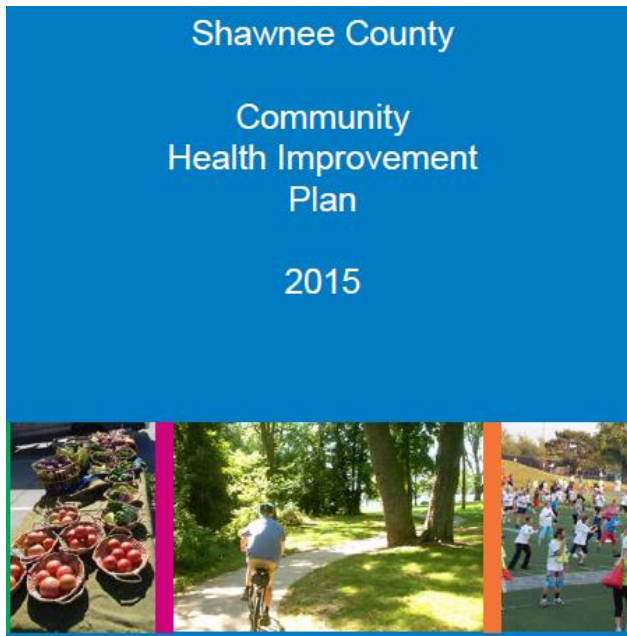
Public Health
Prevent. Promote. Protect.

Shawnee County Health Department

Leading the way to a healthier Shawnee County

The Great News

- Much work being done through community partnerships



2016
Shawnee County
Community Health
Needs Assessment



Public Health
Prevent. Promote. Protect.

Shawnee County Health Department

Topeka Community Foundation Health Leadership Initiative



Public Health
Prevent. Promote. Protect.

Shawnee County Health Department



THE FOOD SYSTEM IN SHAWNEE COUNTY



Public Health
Prevent. Promote. Protect.

Shawnee County Health Department

Leading the way to a healthier Shawnee County

SAVE THE DATE

County Health Rankings: A Community Conversation

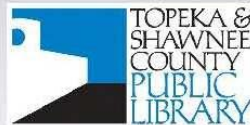


Monday, April 9th, 2018

11:45am - 1:45pm

Topeka & Shawnee County Public Library

Additional details to follow



Public Health
Prevent. Promote. Protect.

Shawnee County Health Department

Leading the way to a healthier Shawnee County
15

SUMMARY

1. Where we live matters to our health
2. Health is more than health care
3. Promoting a cultural shift towards health requires more than just efforts from the health sector
4. Progress takes time



Public Health
Prevent. Promote. Protect.

Shawnee County Health Department